

**Preferred Riverwalk Alternative Components:**

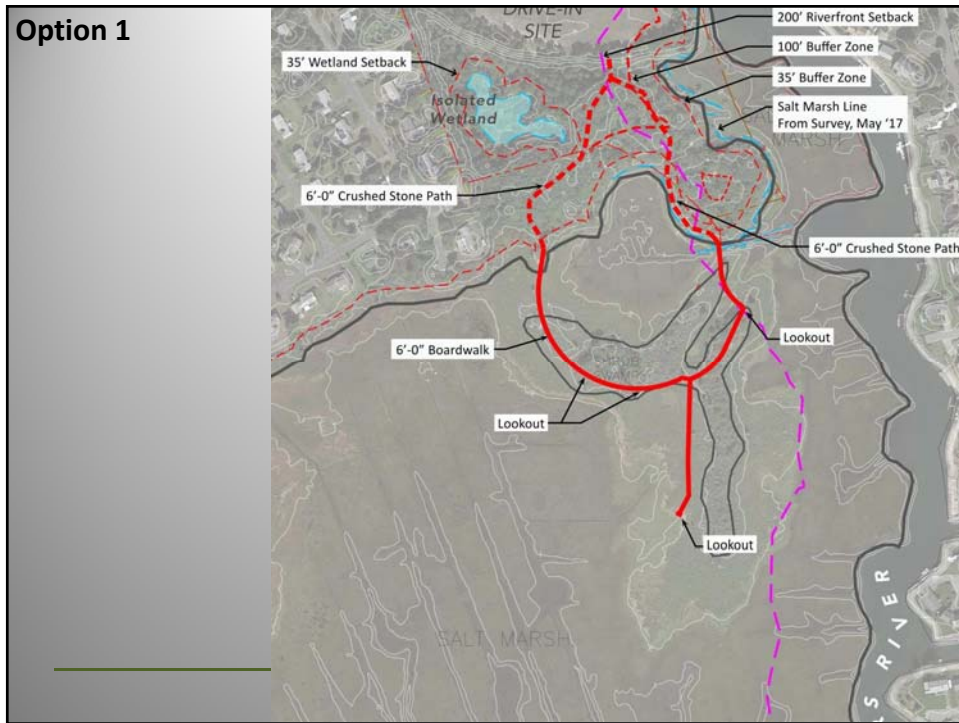
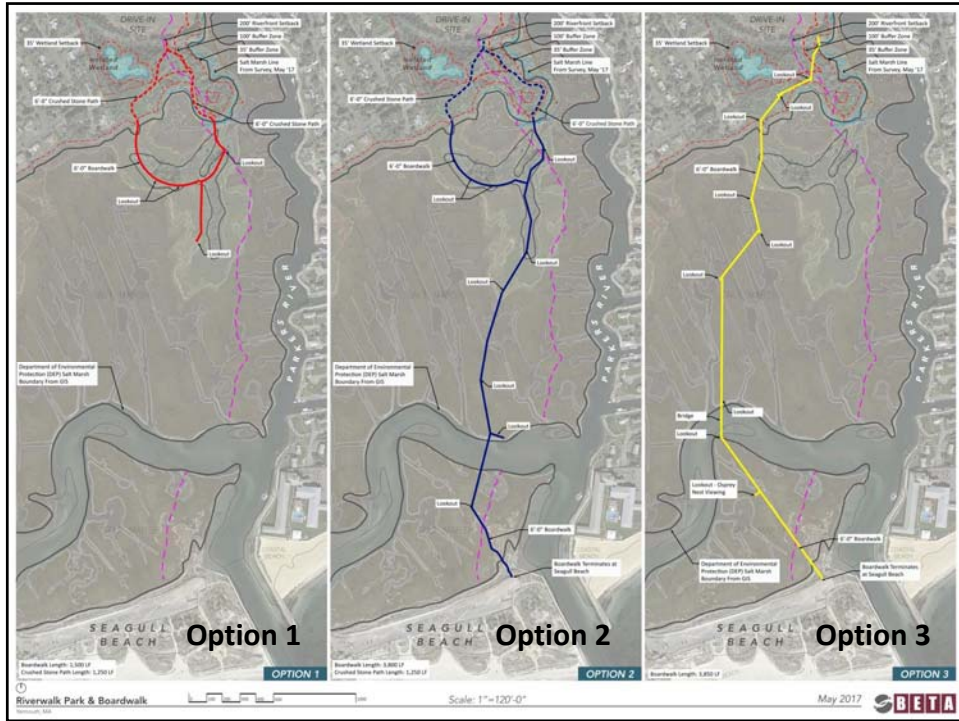
- Kayak:** Include space for vendor trailer for rentals, leased storage space, and safety/educational kiosk on sharing the river.
- Artist Shanties:** Identify locations for potential future artist shanties or tents.
- Food Trucks:** Food trucks for special events only, can designate certain parking areas for food trucks during events.
- Public Art:** Provide opportunities throughout the park.
- Educational Opportunities and Interpretive Storage:** Provide opportunities throughout the park, especially at the upwell and kayak launch.
- Interacted/Recreational Playspaces:** Include play area close to the open green space with shade trees.
- Events/Activities:** Provide open lawn space with Pavilion/picnic tables for wide variety of events and activities.
- Entrance and Future Pump Station Location:** Entrance location to line up with main parking entrance to Captain Parkers and allow future Pump Station to be on the east side to minimize impacts to new access road. Prefer a curve in the entrance road to reduce speeds, but location of teaching field and pump station may govern.
- Fencing:** Ensure a view from the parking areas so people can enjoy the area even in cooler weather or from their car. May require the parking area to be slightly elevated to view over landscaping. Curve the parking area to mimic the river, extend parking and turn around to kayak launch, and maximize remaining land for Lot 2. Include elevated walkways within the parking areas to reduce speeds and provide pedestrian access to Lot 2 from the parking area.
- Upwell:** Keep pathways away from the Upwell, which can be noisy. Provide maintenance vehicle access.
- Seating Options:** Provide for variety of seating options, including shade structures and less formal seating, such as boulders. Locate to prevent impacts to views and minimize maintenance.
- Restrooms:** Provide traditional restrooms by the parking area with a portable toilet enclosure near the kayak launch (similar to Dennis Pond). Mounded leach field will need to be located based on perc testing and groundwater depths, which may impact the park layout.
- Landscaping:** Reduce the number of trees to maintain vistas, increase visibility for security and reduce maintenance costs. Keep one large grassed area for events, but reduce mowing and watering by having more maintenance free native vegetation. Use vegetation buffers to restrict access to the salt marsh. Foster butterfly and pollination. Include watering spigots throughout property.
- Security and Safety Measures:** Design to maximize policing of the area by allowing police vehicles to patrol the length of the park. Add decorative lighting and consider adding security cameras. Park to be closed dusk to dawn. Consider providing a gate, but would not be locked daily (none of the beach properties are currently locked at night).
- Litter:** Install trash cans throughout park that allow access with the trash truck.

**CONCEPT SKETCH RIVERWALK PARK COMBINATIONS OF OPTIONS A & C 6/28/17 KDW**

Yarmouth Riverfront Park & Boardwalk

**CONCEPT SKETCH REVISED ENTRANCE 7/10/17 - KDW**

Yarmouth Riverfront Park & Boardwalk



**Option 2**



Yarmouth Riverfront Park & Boardwalk

**Option 3**



Yarmouth Riverfront Park & Boardwalk